



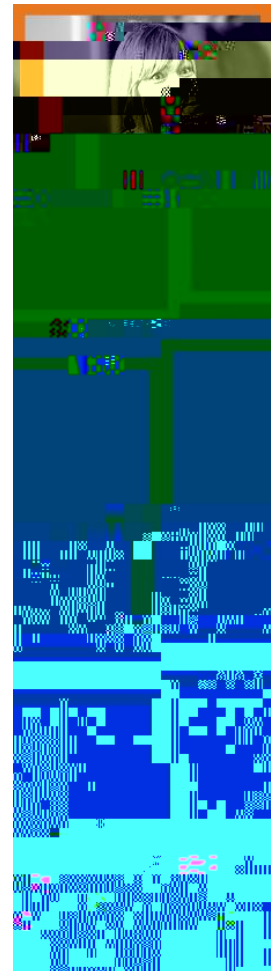
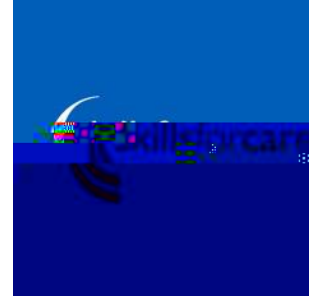
TLAP - Making It Real

TLAP Making it Real puts integration into context. People with lived experience were involved throughout the development of the I and We statements to support good personalised care and support, with the belief that people want to have a life not a service with more choice and control.

“I have care and support that is co-ordinated and everyone works well together and with me.”

“We work in partnership with others to make sure that all our services work seamlessly together from the perspective of the person accessing services.”

[Find out more at thinklocalactpersonal.org.uk](http://thinklocalactpersonal.org.uk)

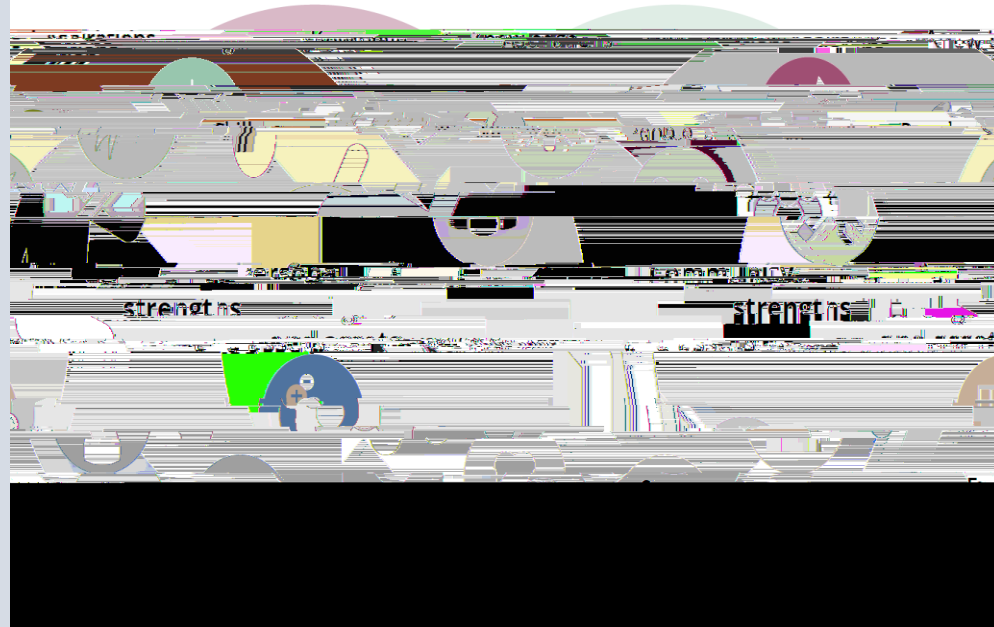


Looking ahead why does integration matter?

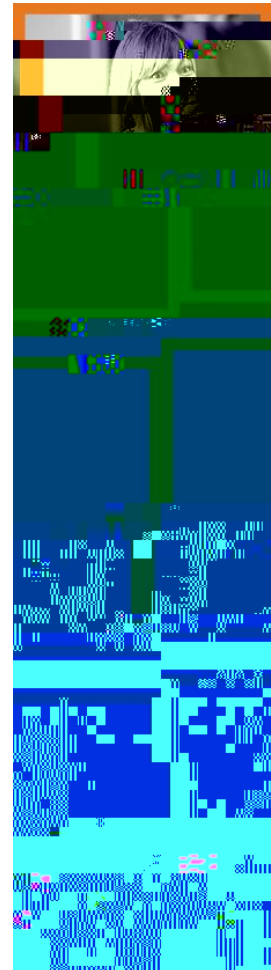
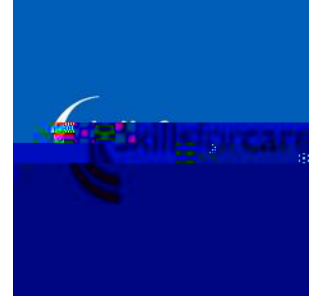
Our current system needs to transform to meet longer term demand.

People are living longer with more complex needs.

Better focus on prevention and promoting health and wellbeing, changing



Taken from NICE/SCIE - [Evidence for strengths and asset based outcomes - quick guide](#)



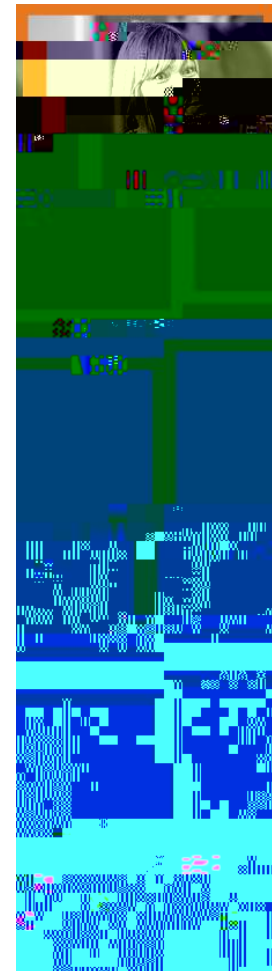
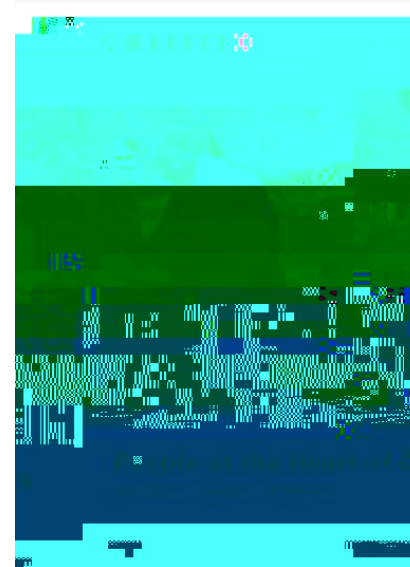
Legislation, policy and guidance

Current legislation

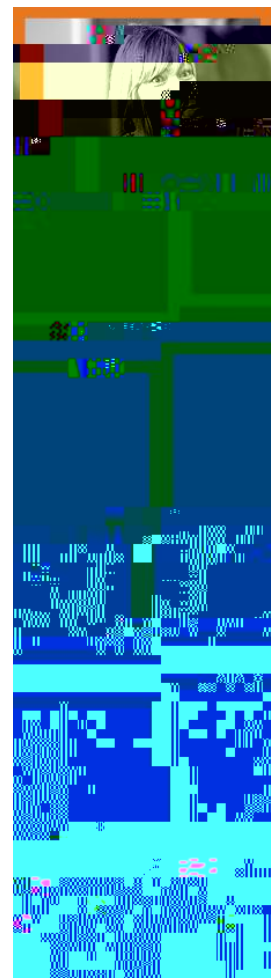
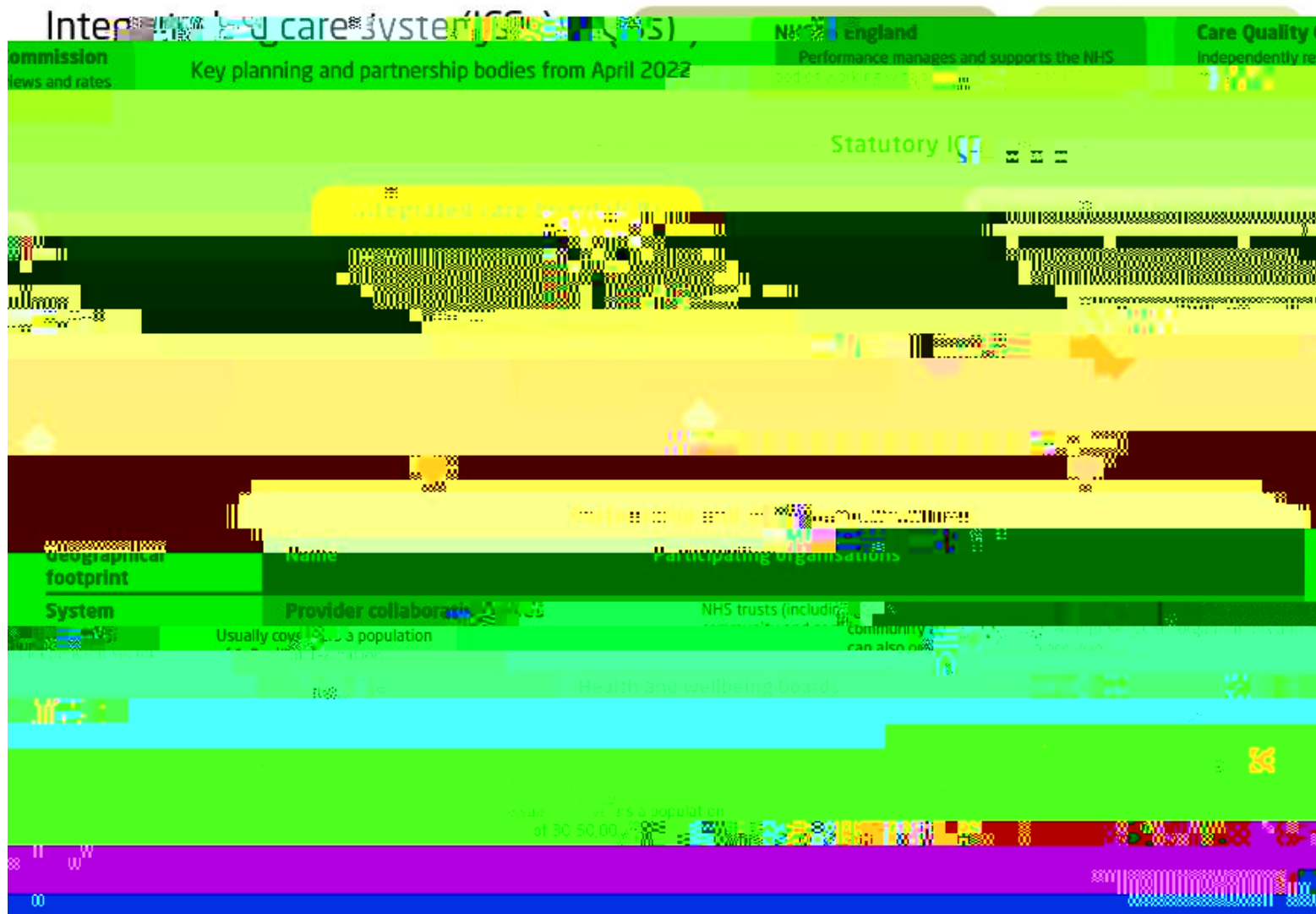
Care Act 2014

New legislation

Health and Social Care Act 2022



Integrated Care Systems - A three tiered model



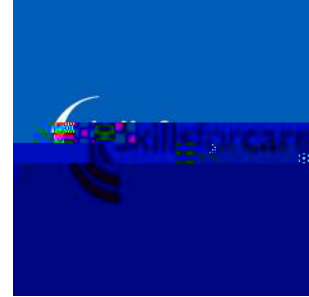
ICS governance

The statutory ICS will be made up of two key bodies:

Integrated Care Board (ICB) take on planning functions previously held by clinical commissioning groups

Integrated Care Partnership (ICP)

involvement of GPs (Int-Partnership Integrated Care)



Partnership and delivery

Provider collaboratives

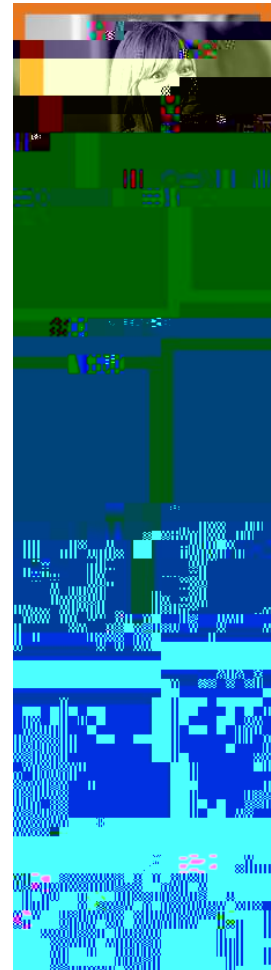
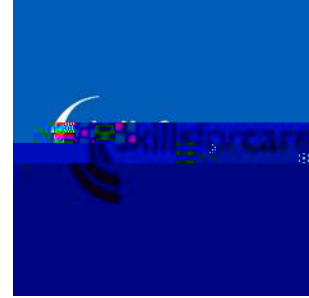
Health and wellbeing boards

Place based partnerships

Primary care networks (PCNs)

The Care Quality Commission (CQC) will independently review and rate the quality of partnership working within ICSs.

The NHS organisations within ICSs, including ICBs, NHS trusts and foundation trusts, will be accountable to



Find out more

[Skills for Care Integration](#)

[Skills for Care Workforce Data - My ICS area](#)

[NHS England Integrated Care](#)

[Evidence for strengths and asset-based outcomes - quick guide](#)

[Think Local Act Personal - Making it Real](#)

[People at the Heart of Care: adult social care reform white paper](#)

[Joining up care for people, places and populations](#)

[NHS People Plan](#)

